






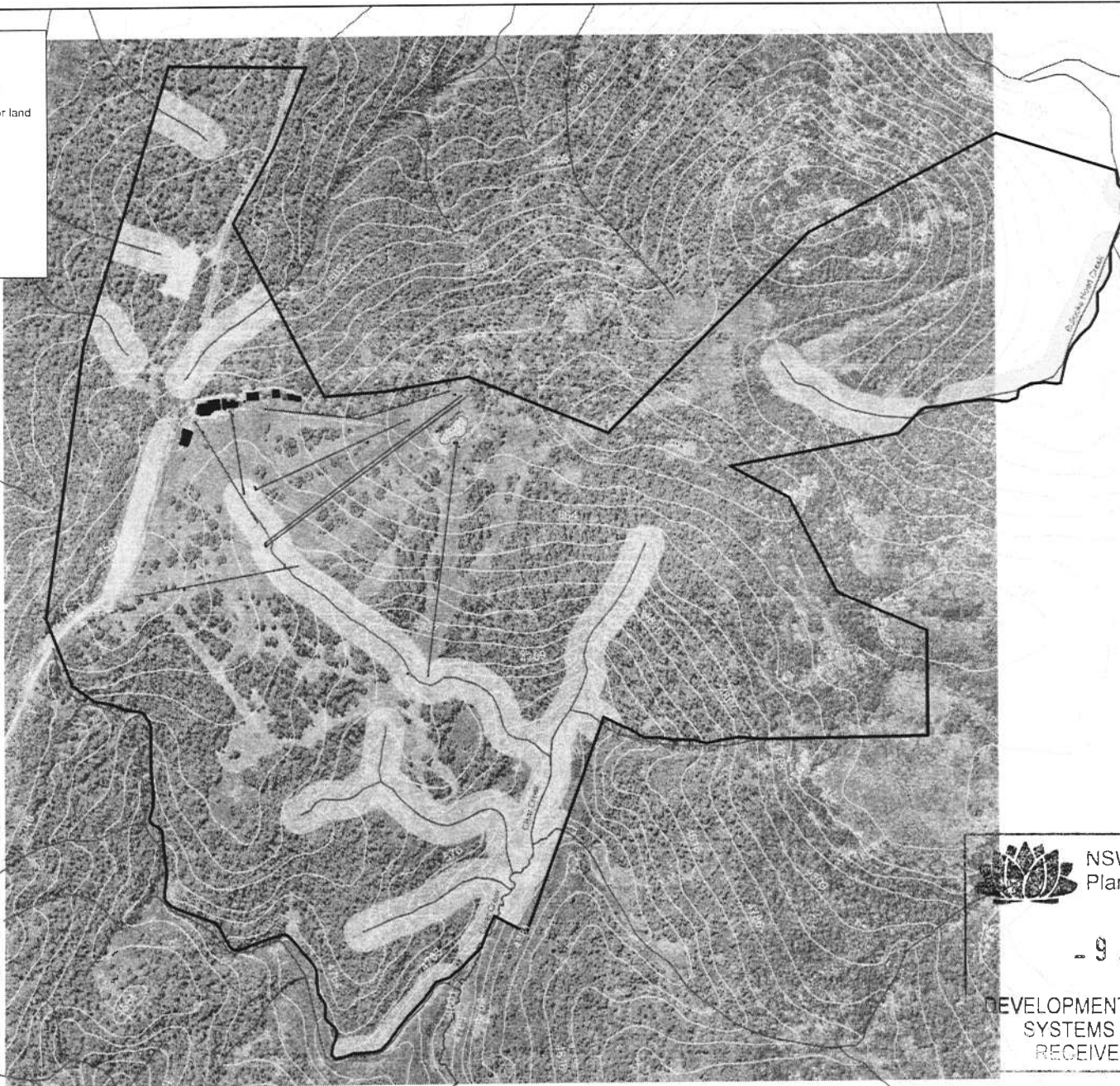




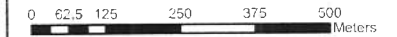
Legend

-  Resort boundary
-  *Riparian corridor land
-  Watercourses
-  Ponds & dams
-  Contours
-  Lifts
-  Buildings



1:8,500

GDA 1994 MGA Zone 55
Scale based on Resort Site



Notations:

Map produced by NSW Department of Planning, Jindabyne Office, 29 September 2006
Data supplied by NSW Department of Lands and AARL Sunraysia Pty Ltd

Aerial coverage at 1:10000 scale for part of the land within Mount Selwyn is not available. For further information contact NSW Department of Planning.

*Riparian corridor land 40 metre buffer

Disclaimer: The State of New South Wales and the Department of Planning and its employees, officers, agents or servants are not responsible for the result of any actions taken on the basis of the information contained on this map or for any errors, omissions or inaccuracies contained in this map. The State of New South Wales and its employees, officers, agents or servants expressly disclaim all and any liability and responsibility to any person in respect of anything and of the consequence of anything done or omitted to be done by any such person in reliance, whether wholly or partially upon the information contained in this map.



NSW GOVERNMENT
© Copyright New South Wales Government
Planning & Infrastructure

9 JAN 2015

DEVELOPMENT ASSESSMENT AND
SYSTEMS PERFORMANCE
RECEIVED - JINDABYNE

ENVIRONMENTAL PLANNING & ASSESSMENT ACT 1979
STATE ENVIRONMENTAL PLANNING POLICY
(KOSCIUSZKO NATIONAL PARK - ALPINE RESORTS) 2007

I, FRANK SARTOR, MINISTER FOR PLANNING, MAKE THE
STATE ENVIRONMENTAL PLANNING POLICY (KOSCIUSZKO
NATIONAL PARK - ALPINE RESORTS) 2007 PURSUANT TO
THE ENVIRONMENTAL PLANNING & ASSESSMENT ACT 1979.